

Enhancing our efforts to improve Canine genetic Health

Åke Hedhammar

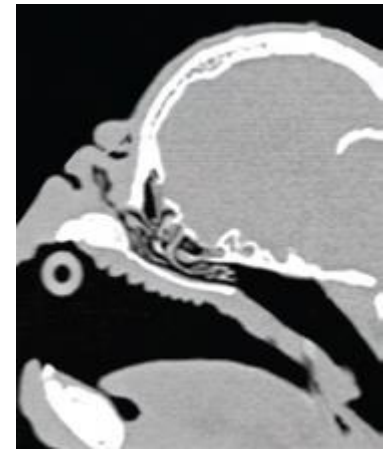
DVM, Prof. Internal Medicine, Dipl ECVIM




Half a century

and then?

Screening/ registries




Still needed

- ▶ **Harmonisation**
 - ▶ **Exchange**
 - ▶ **Cost –benefit analyses**
 - ▶ **Breed specific Strategies**
- 

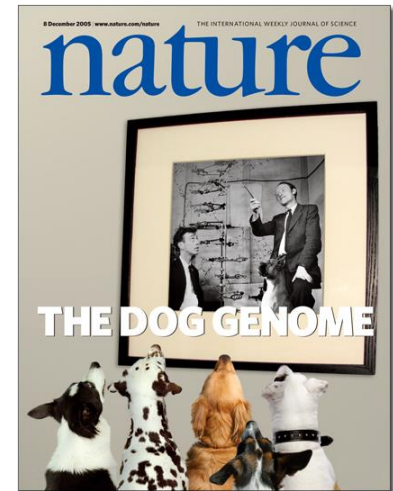
Injuries and diseases related to conformity



Still needed

- ▶ **Prevalence data**
 - ▶ **Breed specific programmes**
 - ▶ **Breed specific strategies**
- 

Molecular genetic tests



Really needed

- ▶ **Validations**

- ▶ **Breed specific Strategies**

**Most conditions are not
visible**

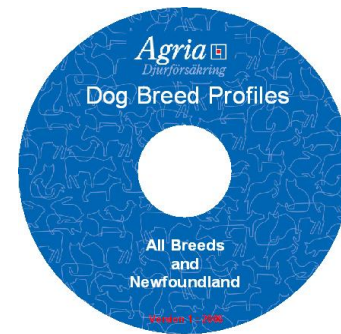
**and / or
possible to screen for**

**either by phenotype or
genotype**



Epideimiological data

- ▶ Breed surveys
- ▶ Hospital/ clinics based data
- ▶ Insurance data



Most dogs are not of any particular breed



We Need

Population based

Data

Strategies



Needed collaborations

Veterinary profession

Kennel Clubs

Breed clubs

Epidemiologists

Geneticists



Where to meet

Dog Health Workshops



IPFD/ DogWellNet



International
Partnership
For Dogs



DogWellNet

The role of IPFD / Dog WellNet

- ▶ To harmonize
- ▶ To validate
- ▶ To exchange



International
Partnership
For Dogs



DogWellNet