



**Fédération
Cynologique
Internationale**

For Dogs Worldwide



THE KENNEL CLUB



It's all about balance

Together we can make the difference!



How's your balance today ??



It's not about ME....it's about YOU !!!

It's all about balance!

Judging and breeding is “choosing dogs to improve the next generation”

Big responsibility...together...

Constant search for the best dog “all over”

Chicken or Egg?



WHEN JUDGING AND BREEDING....

...THE STANDARD IS LEADING

Pure bred dogs

- F.C.I.
- A.K.C.
- K.C.



- BREEDS
 - Standard per breed
 - Developed by country of origin
 - Advise from experts?!
 - APPROVED by FCI / AKC / KC
 - Judging according to the standards

But how to judge or breed ?

Toy



**Fédération
Cynologique
Internationale**

For Dogs Worldwide

Utility



THE KENNEL CLUB

Non
Sporting



Is that a problem?

- HAIR ON THE HEAD
 - KC: Head well furnished with long hair, falling forward **but not affecting the dog's ability to see**
 - FCI: Head well furnished with long hair, falling forward **but not over eyes and not affecting the dog's ability to see**
 - AKC: The head is well furnished with long hair, falling forward over the eyes and foreface.

Is that a problem?

- TEETH
 - KC: Scissor or reverse scissor bite
 - FCI: Scissor or reversed scissor bite
 - AKC: Scissor or reversed scissor bite. A slightly undershot bite is acceptable

Is that a problem?

- COAT
 - KC: Double coat. Undercoat fine and woolly. Top coat profuse, fine but neither silky nor woolly; long; either straight or waved but not curly.
FCI: Double coat. Undercoat fine and woolly. Top coat profuse, fine but neityher silky nor woolly. Long, either straight or waved but not curled
 - AKC: Double coat. Undercoat is soft and woolly. Outer coat is profuse and fine but never silky or woolly. May be wavy or straight. Coat is long but should not hang to the ground. When standing on a hard surface an area of light should be seen under the dog



Should show plenty
of daylight!



KC: an area of
light should be
seen under the
dog

Judges world wide working together can make the difference

- **RESPECT**
 - for differences in standards
 - For differences in types
 - for dogs (and their owners) entering at shows
 - for other opinions in judging
- **How to find the nicest but healthy and social dog that can work for the purpose it has been bred for originally!**
- **We don't tell what to do:** We only tell to remember that you have to choose dogs to improve the next generation!
- Find the balance in judging and consider the word "too"
- Judging the total dog not looking at every detail

One breed ?!



One breed ?!



One breed ?!



One breed ?!



One breed?



One breed?



One breed?

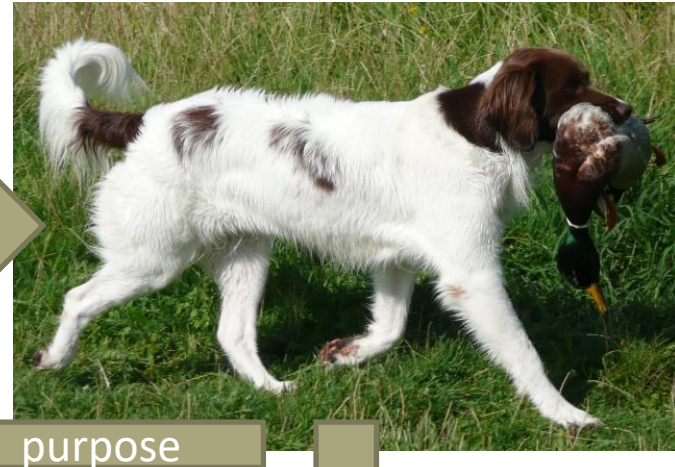


Development of the breeds

- Every breed started for a purpose
 - Hunting
 - Fighting
 - Guarding
 - Own surviving (keeping warm / food)
 - Pleasure / companionship

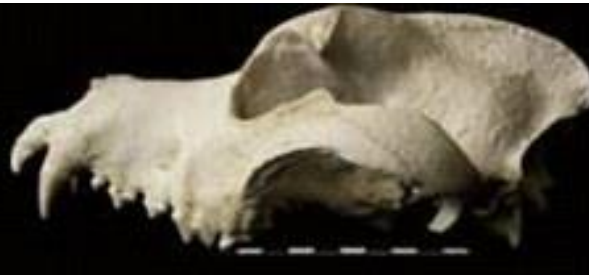


Development of the breeds





Collie



St. Bernard



Bull Terrier



Chihuahua



French Bulldog



Pug



German Shepherd

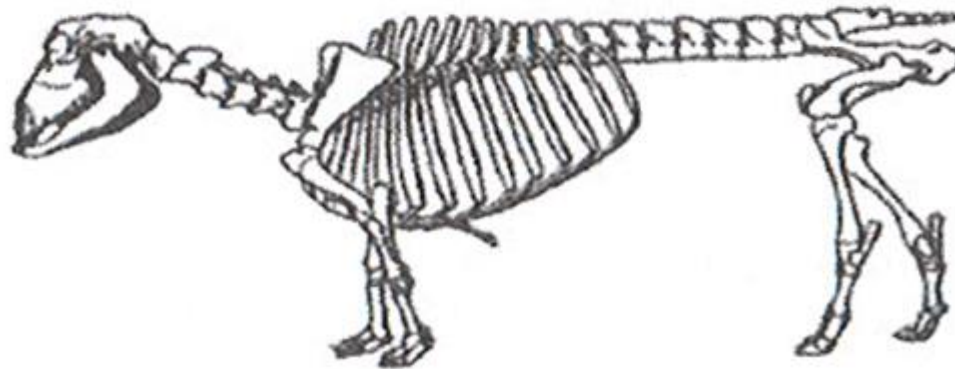
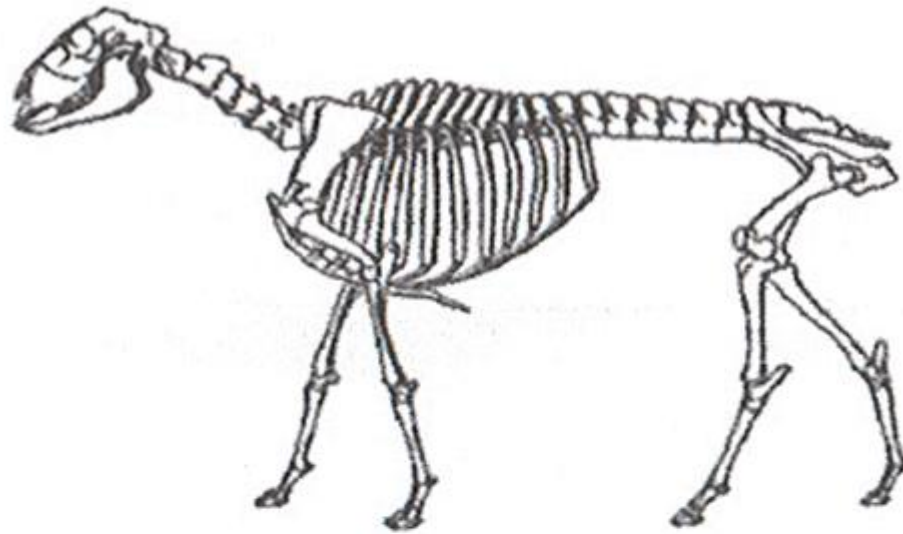


Wolf



Bernese Mountain Dog





Shortening of the long bones leads to a remarkable result

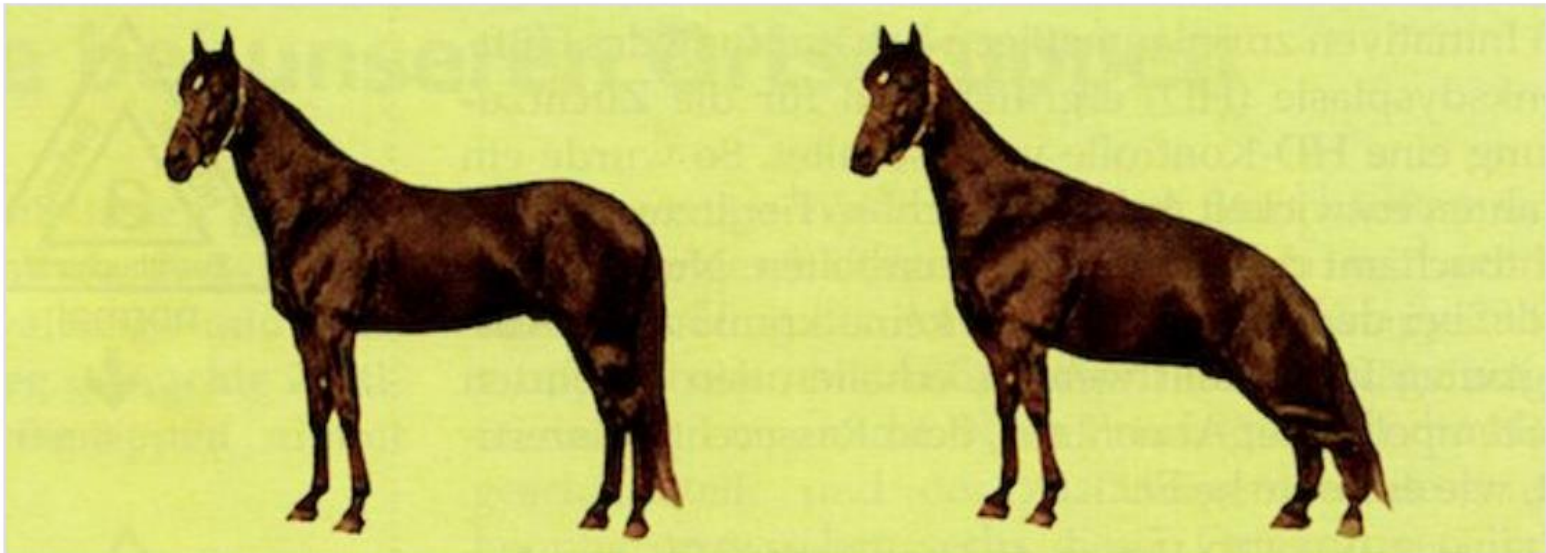
Imagine



1900



PRESENT



Just imagine the horse had during the course of the last 25 years, taken such development.

Judging dogs at shows

- Choosing dogs that can be used to improve the next generation
- Picking out the nicest looking dogs that are fit for their function
- Advise to the owner how to improve some aspects



International statement

- FCI Show Judges
Code of Commitment
for the welfare of the
Pure Bred Dogs
- FCI Basic statement
for Show Judges
“dogs fit for their
original function”



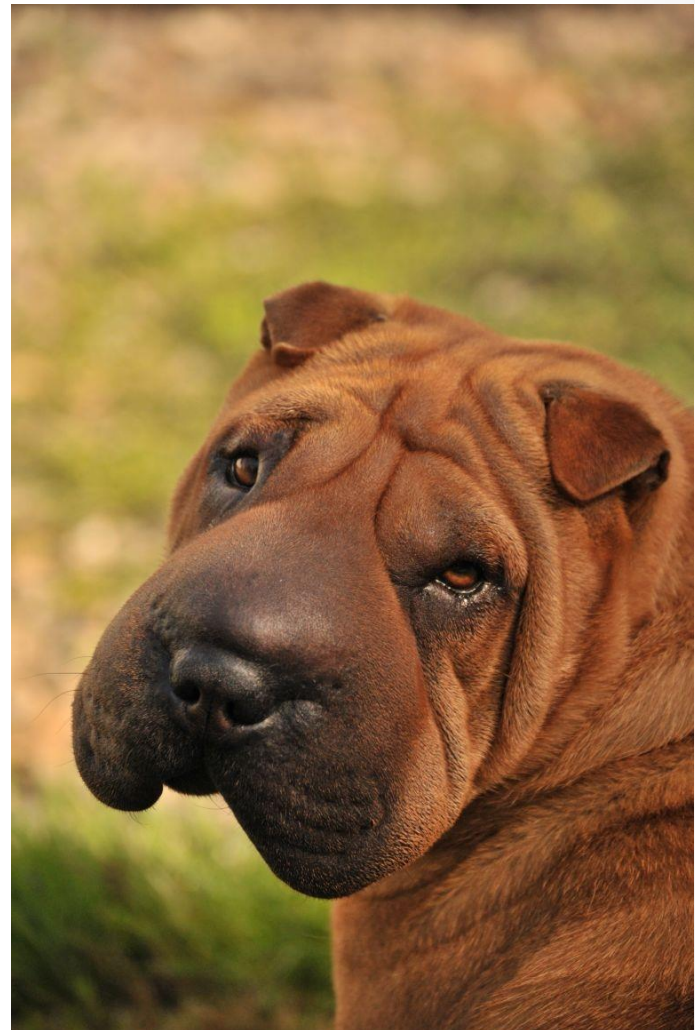
Code of Commitment Welfare

- Judging according to the FCI standard
 - Regarding health and welfare
 - Regarding fit for function
 - Each dog treated equally
 - Critiques in a positive manner
 - Respectful to colleagues



Basic statement Show Judges

- Dogs fit for their original function
 - The valid FCI Standard
 - Health and Welfare
 - Fit for Function
- Exaggerated never an Excellent and/or Award
- Form when a judge thinks there's a problem in the breed / obligation to report possible problems in a breed



Basic statement Show Judges

- **Points to be paid attention to:**
 - Disharmony in construction
 - Breath (nostrils, noisy breathing, pumping)
 - Teeth (narrow, inverted canine teeth, small teeth, not closing jaws)
 - Eyes (too large and protruding, too loose eye rims, too wet, too deep set)
 - Skin too loose / irritation of the skin
 - Obesity / Overweight (must breathe properly)
 - Temperament and behaviour (aggressive, overly shy)
 - Abundant coat and grooming (not allowed to change the appearance by using artificial substances, colour or form of coat, skin or nose)
 - Dogs has to be shown on loose leash and in a natural way

Problems you can “see”

- HEART: animals should move easily and full of energy, it's important the dogs are not tired or coughing.
- SKIN AND COAT PROBLEMS: Skin and Coat are always something the judges closely examine. Bad skin or coat should not be rewarded on shows
- PROBLEMS IN HIPS AND MUSCLE: Should move harmoniously, steady and full of energy. Less muscle should not be rewarded at shows. The extremities are closely watched, the dog should not have any pain or can't compete if there are problems / kinked tail → genetic problems.
- Eyes: the eyelids are closely examined. And the dogs should not show eye discharge. Eyelashes growing inside → distichiasis. Eyes (hair) also affect behavior
- Nose: should be open nostrils. Breathing problems

Tests...

- Dogs that cannot see because of hair / eye problems ave difficulties in education and behavior
- Dogs with closed / narrow nostrils have other experiences that dogs with open nostrils
- Dogs with very furnished ears have other experiences than dogs with normal hair on ears

Nose





Skin





Teeth

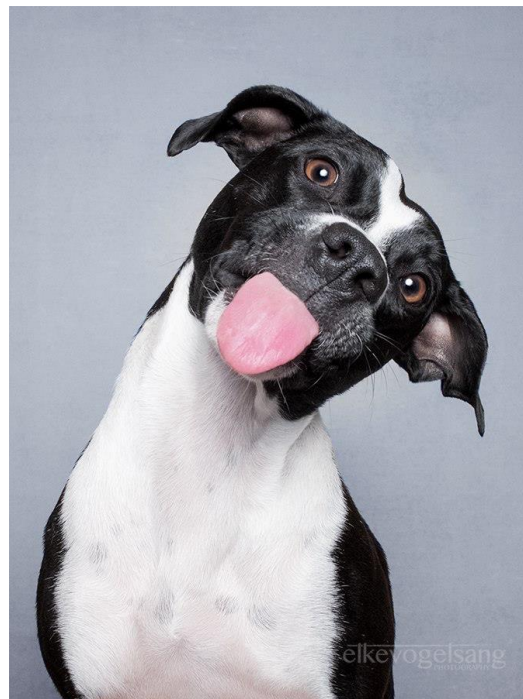




This diamond shaped eye is a sign of Ectropion.







Champions! But fit for function?



It's all about balance!

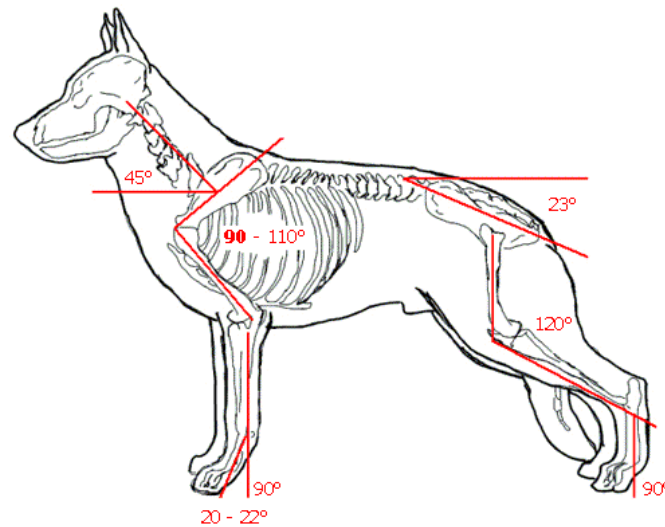


Working Neapolitan



Show Neapolitan

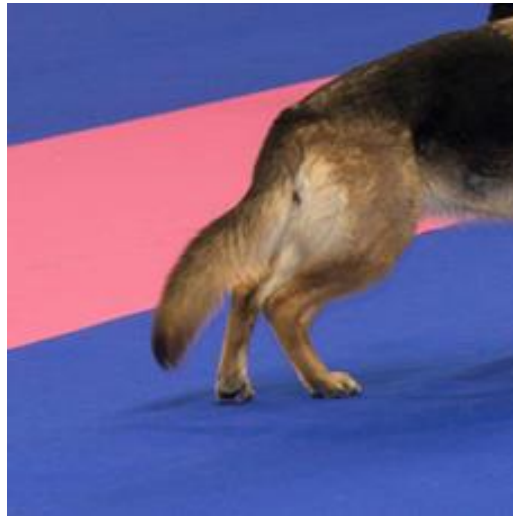
The German Shepherd Dog



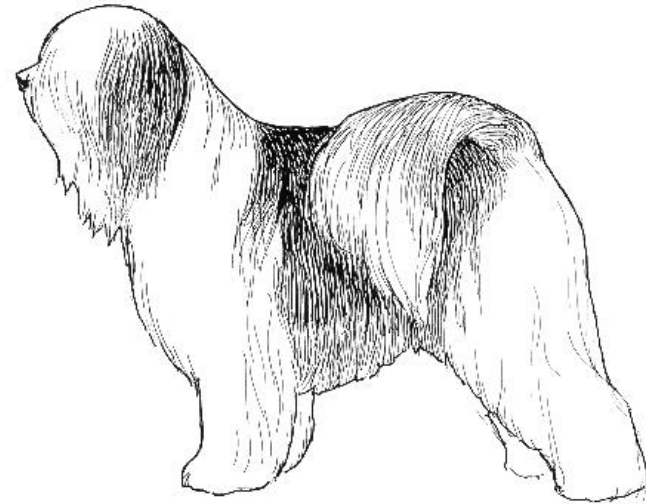
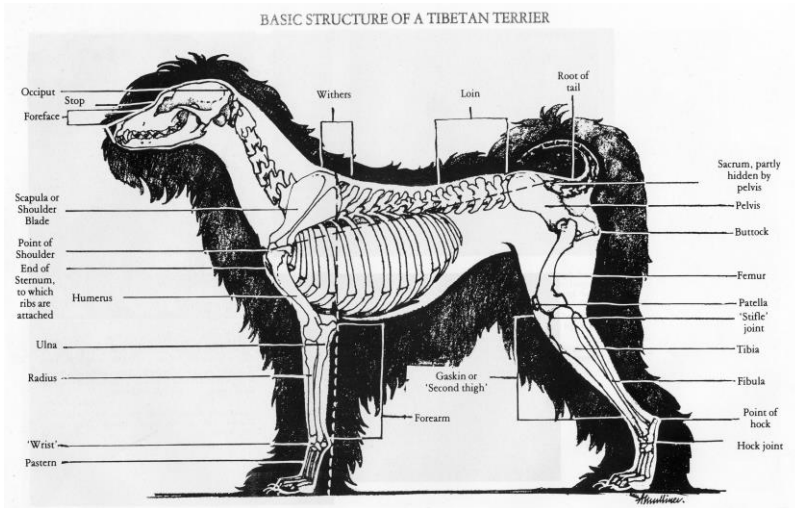
Fit for function ?? !!



Fit for function?? !!



Do you know your standard?



Do you know? The first sentence in the standard

- A = Elegant, medium-sized, long-haired, generally square outline
- B = Massive but Sound, medium-sized, long-haired, generally square outline
- C = Sturdy, medium-sized, long-haired, generally square outline

Sturdy



Do you know?

- A Tibetan Terrier is:

A = a bit longer than high

B = a bit higher than long

C = square looking

Do you know?

- HEAD:

A = Head well furnished with long hair, falling forward, but not over the eyes

B = Head well furnished with long hair, falling forward, covering the eyes

C = Head well furnished with long hair, falling forward, not covering the eyes too much

Do you know?

- General appearance hind quarters

A = Heavily furnished, well muscled. Well bent stifles and low set hocks, giving level top line and drive

B = Heavily furnished, well muscled. Stifles bent as good as possible, high set hocks giving level top line and drive

C = Heavily furnished, well muscled, Sufficient angulated in knee and hocks, giving level top line and drive

Do you know?

- About the coat

A = Double coat. Thick Undercoat. Top coat harsh and neither silky nor woolly. Long, either straight or waved but not curled

B = Double coat. Undercoat fine and woolly. Top coat profuse, fine but neither silky nor woolly. Long, either straight or waved but not curled

C = Double coat. Undercoat fine and woolly. Top coat profuse, fine but neither silky nor woolly. Very long, either straight or waved but not curled

It's all about balance!

- Square looking versus Short legs
- Neck of medium length versus too long in neck
- Well bent angulation versus over angulated
- Sturdy, herding, guarding versus too Heavy all through
- Body well muscled, compact and powerful versus too narrow all through , slab sided
- Long-haired, not over eyes versus over coated









The future!

- **Don't only say YES but also ACT**
 - Breeders
 - Judges
 - Vets

Remember your balance !!



Only together we
make the
difference !



**Fédération
Cynologique
Internationale**

For Dogs Worldwide



THE KENNEL CLUB

