

ABOUT ▾

MEMBERS ▾

COMMITTEES ▾

GUIDELINES ▾

ACADEMY

CONGRESS ▾

NEWS ▾



Dog Breeds: What you need to know

🕒 June 22, 2020 📁 Committees

Staying up to date with the common, let alone the rare, health risks in susceptible dog breeds can be difficult. In this new regular feature, our Educational Partner, the International Partnership for Dogs (IPFD), signposts resources on a particular breed and highlights breed-specific diseases.

Meet the Irish Wolfhound

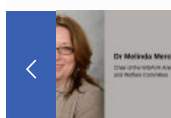
Country of Origin and Parent Breed Club: Ireland; international breed organization: The Irish Wolfhound Database, one of our IPFD collaborators, with information on population numbers, genetics, inbreeding measures, and on specific dogs, currently estimates that there are more than 21,600 dogs for 2018 (pedigree/registered dogs).

- In 2018, the highest numbers of puppies registered were in the USA (>5600) and Germany (>3200), with between >1,000-2,000 puppies registered in each of the UK, Canada, Czech Republic, France and Finland. Historical median litter size = 4 (1-19)
- Wolfhound breed groups around the world are researching and enacting health programs and surveys on topics such as longevity, cancer, heart disease, gastric dilatation and pneumonia. Some of these issues may be influenced by the conformation of this giant breed, including its deep chest.

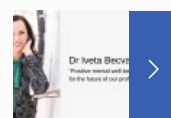


For more information, check out the Irish Wolfhound page

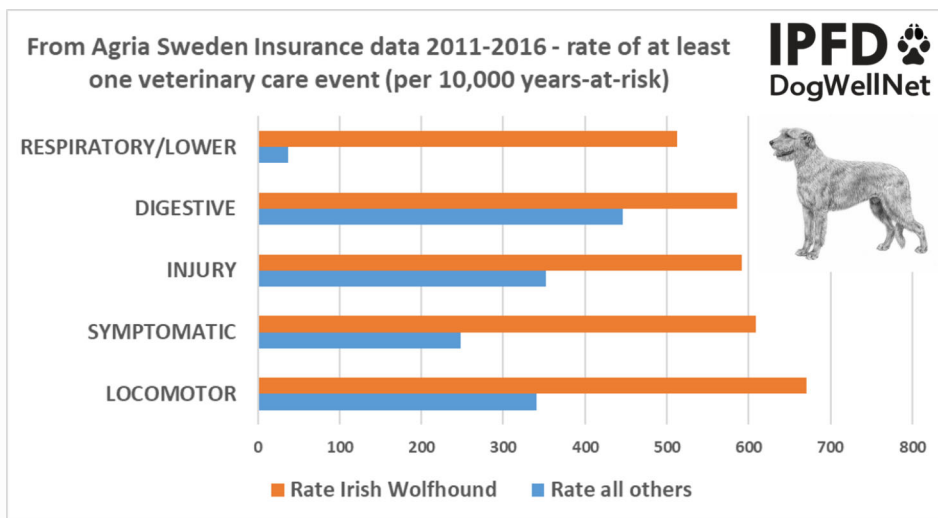
in our IPFD Breeds Database on DogWellNet.com. There you will find information for veterinarians and their clients, with links to groups, from various countries, which are working for the health of their breed and providing useful resources.



Dr. Malivka Miro
Chair of the Veterinary
and Human Genetics



Dr. Iveta Becova
President member and
for the future of our group



The image shows Swedish insurance data from 2011-2016, on 1.7 million dog-years-at-risk for all breeds and >1,700 for the breed. IWs were 13 times more likely to experience an event of lower respiratory disease, compared to all other breeds. Pneumonia is a deadly disease in IWs, so resources like our article on pneumonia in the IW, are useful for veterinarians and owners.

The full information provided on breeds on the links helps veterinarians to address both specifics and the big picture in communicating with clients.

The International Partnership for Dogs (IPFD) is a non-profit working for dog health, well-being, and welfare. This article has been prepared by its CEO, Dr Brenda Bonnett, DVM PhD



Share [f](#) [t](#) [in](#) [p](#)

♥ 0

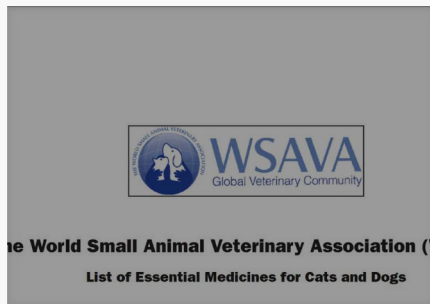
Related posts



July 6, 2020

Welcome to our new WSAVA Committee Members!

Read more



July 6, 2020

WSAVA's List of Essential Medicines for Cats and Dogs published in JSAP

Read more




July 6, 2020

VGG Publishes Regional Guidelines for Latin American Companion Animal Practitioners




Read more

Subscribe to WSAVA News, Events and Upcoming Activities



**WSAVA**
Global Veterinary Community

72 Melville Street, Dundas,
Ontario
Canada L9H 2A1
✉ admin@wsava.org
☎ +44 7986 797378



Pages

- ▶ Home
- ▶ About
- ▶ Our Members
- ▶ Committees
- ▶ Global Guidelines
- ▶ WSAVA Academy
- ▶ News & Events
- ▶ Account

Quick Links

- ▶ Member Benefits
- ▶ Careers
- ▶ Associations
- ▶ Tier Information
- ▶ Member Categories & How to Join
- ▶ WSAVA in the News
- ▶ Press Releases
- ▶ WSAVA Bulletin

World Congress

- ▶ About the Congress
- ▶ Bidding for the Congress
- ▶ Congress Resources
- ▶ World Congress 2020
- ▶ World Congress 2019
- ▶ World Congress 2018

© 2020 WSAVA - World Small Animal Veterinary Association. All Rights Reserved. Website by Best Fix

