



**SVENSKA  
KENNELKLUBBEN**  
HUNDÄGARNAS RIKSORGANISATION



# Breeding dogs in Sweden

## SKK's tools and efforts for improved canine health

Helena Skarp, Sofia Malm, Lotta Olsson and Anne Bucksch  
Department for Breeding and Health, SKK



This poster reviews some of the actions, tools and planned efforts by SKK, the Swedish Kennel Club, to improve canine health.

### Who are we?

- ✓ About 70 employees (and more than 100 dogs) at the SKK central office
- ✓ Dept. for Breeding and Health employs nine persons (among those a veterinarian, a geneticist and animal scientists)
  - Overall responsibility for issues regarding breeding, health and behaviour
  - Link between government, research and breed clubs
  - Help and support to breed clubs with breeding related issues
  - Recording of screening and genetic test results, and prediction of breeding values (EBVs)
  - Education of breeding officials from the clubs by regular courses and conferences
  - International collaborations, e.g. IPFD, FCI and the Nordic Kennel Union



### Breed-specific breeding plans

**All breeds should have a breeding plan, tailored to the conditions of the individual breed.**

Should consider all aspects relevant in the breeding goal, i.e., physical and mental health as well as population structure and genetic variation.

The breeding plans are published on [skk.se](http://skk.se), and on the breed club websites.



Don't miss the new BSI film "pedigree dogs for the future"



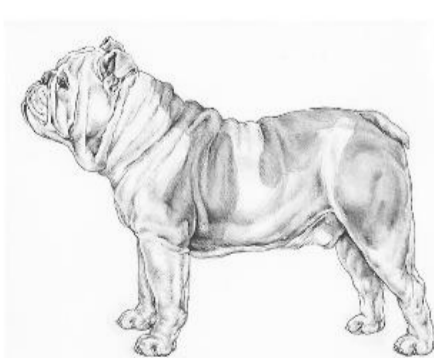
### Exaggerations in conformation

New working group dedicated solely to these issues. Conferences for and education of various stakeholders.

**New screening programme including veterinary examination and fitness test prior to breeding.**

Reporting of surgery/euthanasia due to respiratory issues.

For more information, see our separate poster on brachy work.



### Behaviour and personality assessment

Aims to give an objective description of how the dog reacts to and cope with situations in everyday life.

All dogs over the age of 12 months are welcome.

About 16,700 dogs of 250 breeds have been assessed.

**Genetic analyses show moderate to high heritabilities – enables genetic evaluation!**



### Prediction of EBVs for hip and elbow dysplasia

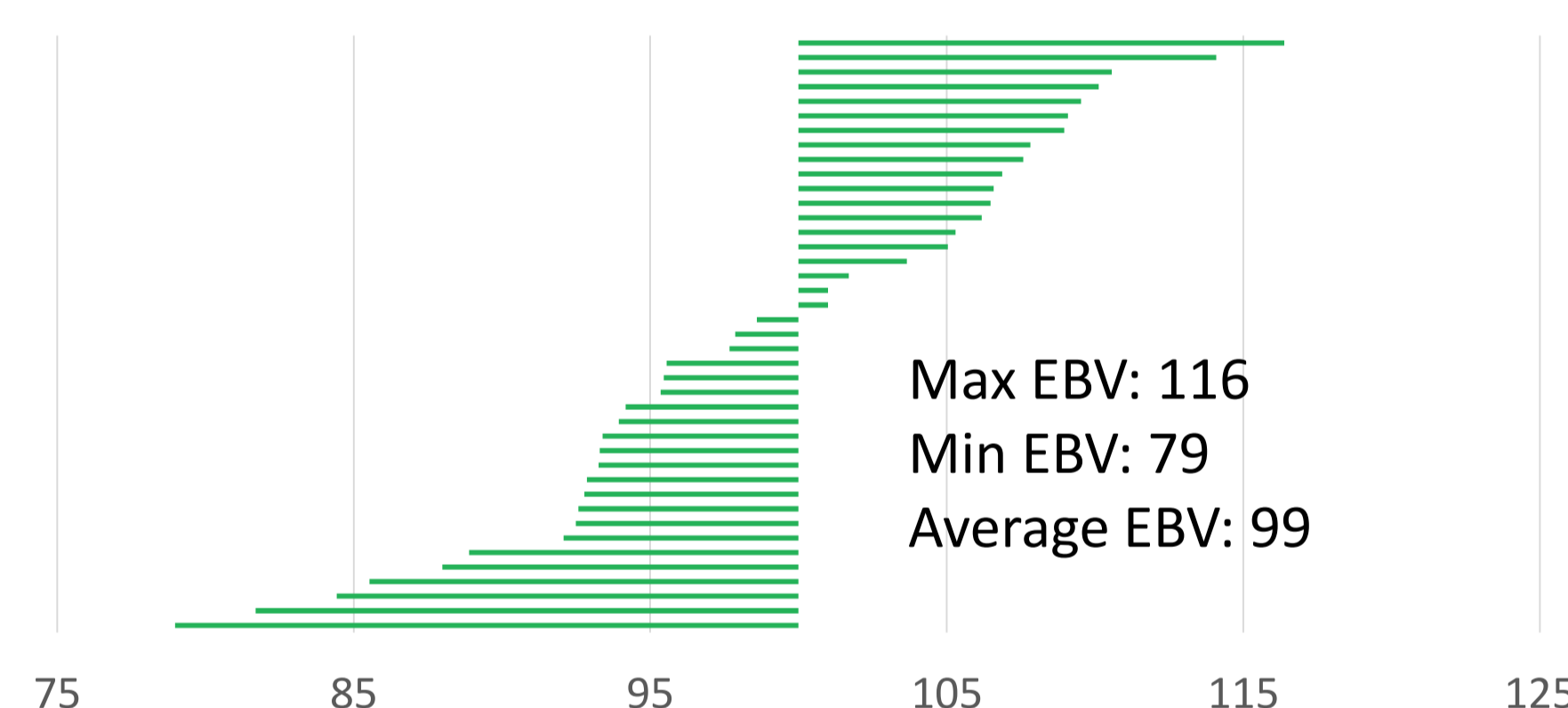
BLUP breeding values for HD and ED predicted once a week.

Include more than 40 breeds for HD and 17 breeds for ED.

EBVs are standardised around 100. Higher values are better.

**Enables more accurate genetic evaluation!**

EBVs for HD in male German Shepherds, born 2010-2014, with at least 20 offspring. All males and their parents are free from HD (A or B) (n = 41). Their EBVs vary considerably.



### Genetic testing

SKK records test results for numerous DNA tests.

Only accurate and relevant tests approved.

ID-control by a veterinarian is mandatory.

Excellent tool if tests are reliable, relevant and used wisely.

**Common policy and guidelines on genetic testing within the NKU, approved by the FCI Breeding Committee.**



### Ongoing projects and future plans

EBVs for additional traits, including behaviour.

Recording of mortality and cause of death.

More education, e.g. e-learning courses.



#### SKK – a club for everyone!

- ✓ SKK is a union of non-profit clubs with about 280,000 individual members
- ✓ Approximately 880,000 dogs in Sweden
- ✓ Two-thirds are pedigree dogs, registered with SKK
- ✓ About 50,000 puppies are registered yearly
- ✓ Database accessible to the public through [skk.se](http://skk.se)